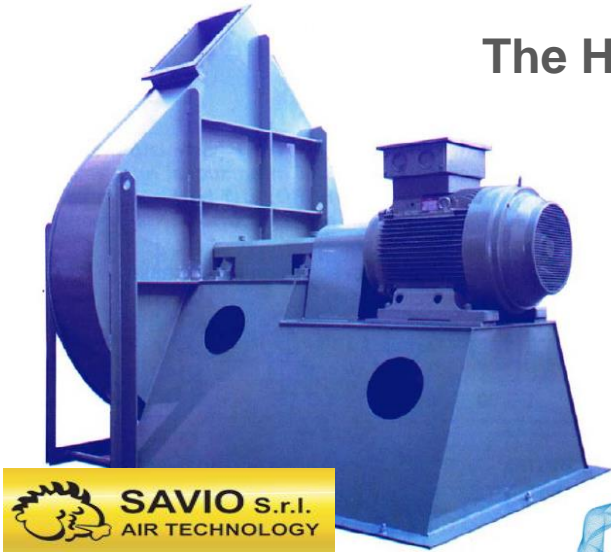
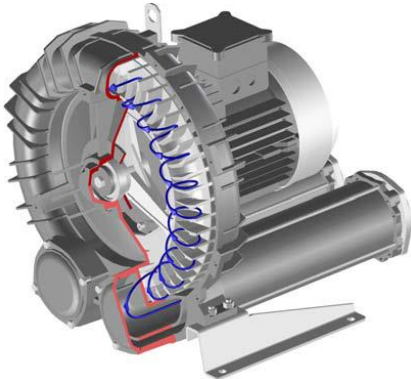


THEREC CORPORATION LTD.

The High Pressure Blower Company



Atex Certified Blowers



ATEX EXPLOSIVE ATMOSPHERES



www.thereccorp.com



MS Series /Single impeller ,Single stage
Flow rate Up to 1,234 m³/hr
Pressure up to +500 mBar
Vacuum down to -375 mBar
Material in Aluminium casting
ATEX explosion proof version is available



MD Series /Single impeller ,Double stage
Flow rate Up to 473 m³/hr
Pressure up to +750 mBar
Vacuum down to -500 mBar
Material in Aluminium casting
ATEX explosion proof version is available



TS Series /Twin impeller ,Single stage
Flow rate Up to 1,985 m³/hr
Pressure up to +450 mBar
Vacuum down to -350 mBar
Material in Aluminium casting
ATEX explosion proof version is available



TD Series /Twin impeller ,Double stage
Flow rate Up to 1,007 m³/hr
Pressure up to +650 mBar
Vacuum down to -500 mBar
Material in Aluminium casting
ATEX explosion proof version is available

ATEX
BLOWERS



THE ORIGINAL ROOTS BLOWER FROM USA



URAI Series / Bi lobe impeller
Flow rate Up to 4,026 m³/hr
Pressure up to +1,034 mBar
Vacuum down to -539 mBar
Material in Cast iron
GAS & Explosion proof version is available



RAM Series / Bi lobe impeller
Flow rate Up to 6,030 m³/hr
Pressure up to +1,240 mBar
Vacuum down to -539 mBar
Material in Cast iron
GAS & Explosion proof version is available



RAM-VJ Series / Bi lobe impeller
Water jet Vacuum pump
Flow rate Up to 4,250 m³/hr
Vacuum down to -813 mBar
Material in Cast iron



RBTM Series / Bi lobe impeller
Bulk Truck Blower
Flow rate Up to 4,250 m³/hr
Pressure up to +1,241 mBar
Material in Cast iron



Tri-RAM Series / Tri lobe impeller
Flow rate Up to 82,850 m³/hr
Pressure up to +1,000 mBar
Material in Cast iron



RAS ,RGS Series / Bi lobe impeller
Flow rate Up to 73,440 m³/hr
Pressure up to +2,413 mBar
Vacuum down to -539 mBar
Material in Cast iron
GAS & Explosion proof version is available

Multi Stage Air & Gas Centrifugal Blower



Flow rate Up to 4,500 m³/hr
Pressure up to 10,000 mmAq (1.0 bar)
Material in cast aluminium
Stainless steel shaft is available on option
Explosion proof, ATEX version. is available
Special seal for gas tight version
Internal special coating for corrosive gas & Biogas



Industrial Type Centrifugal Blower



Flow rate Up to 400,000 m³/hr
Pressure up to 2,800 mmAq
Material in Carbon & Stainless steel
Stainless steel shaft is available on option
Explosion proof version. is available
Internal special coating for corrosive gas & Biogas

Industrial Type Axial flow fan



SAVIO S.r.l. 

Flow rate Up to 150,000 m³/hr
Pressure up to 165 mmAq
Material in Carbon & Stainless steel
High temperature version is available
Extraction towers for roofs



In-line fans with removable bodies and small size for high temperatures (250°C) designed to work interleaved in chimney ducts
Flow rate Up to 2,900 m³/hr
High temperature option, up to 250 degree C



Fan designed with the most advanced technology & experience to withstand extreme working condition in oven, drier and other application with high temperature and humidity
Flow rate Up to 68,000 m³/hr
High temperature option, up to 150 degree C



Centrifugal single-inlet, medium & high-pressure fans with casing and impeller made from cast aluminium
Flow rate Up to 2,300 m³/hr
Pressure up to 945 mmAq
High temperature option, up to 250 degree C



Centrifugal single-inlet, medium-pressure fans with casing and straight-blade impeller made from cast aluminium to transport dust and solids
Flow rate Up to 3,115 m³/hr
Pressure up to 945 mmAq
High temperature option, up to 250 degree C

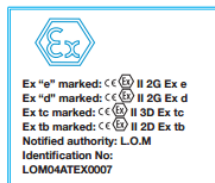


Plastic anticorrosive centrifugal fans with and without ATEX certification
Flow rate Up to 4,500 m³/hr
High temperature option, up to 400 degree C



Smoke extract roof fans 400°C/2h centrifugal roof fans with horizontal or vertical outlet air
Flow rate Up 10,429 m³/hr
High temperature option, up to 400 degree C

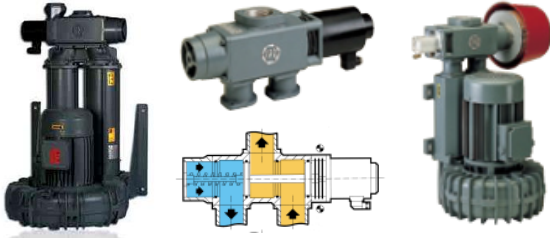
Explosive atmospheres ATEX fans
High efficiency "Efficient Work" fans



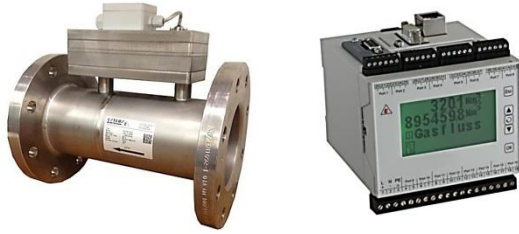
Blower Accessories and Related Equipment



Pressure and Vacuum relief valve
Size 1.0, 2.0, 3.0 & 4.0 inches
Flow rate Up to 2,000 m³/hr
Pressure up to 600 mBar
Vacuum down to 450 mBar



Flow Reversing Valve ,Size 2.0 & 3.0 inches
Pneumatic and Electrical control, 24 VDC
and 220 VAC



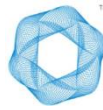
Bio gas Flow Meter size, 1.0" to 16.0" with
Flow computer controller & System
Flow measuring from 0.2 to 16,000 m³/hr



Air and Gas diffuser for waste water
treatment aeration system
Material in Polyurethane and EPDM

empty flexible
NORRES

PRO₂AIR[®] Pre-PUR 602



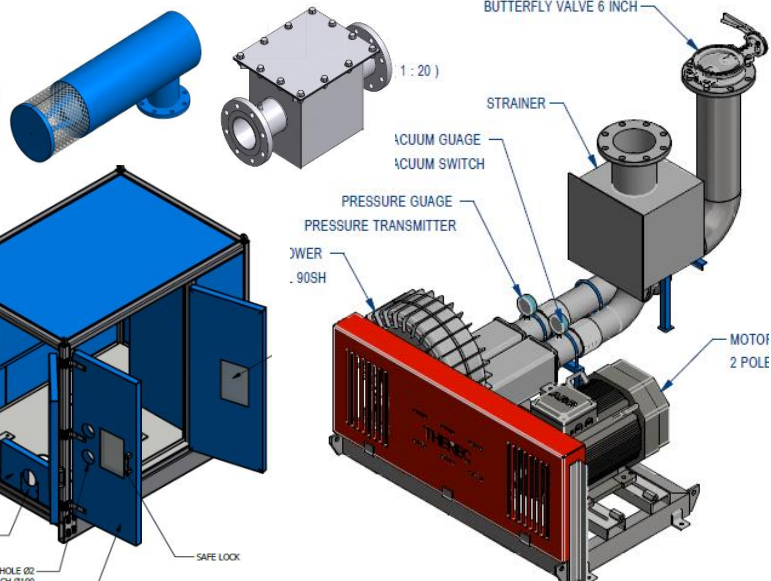
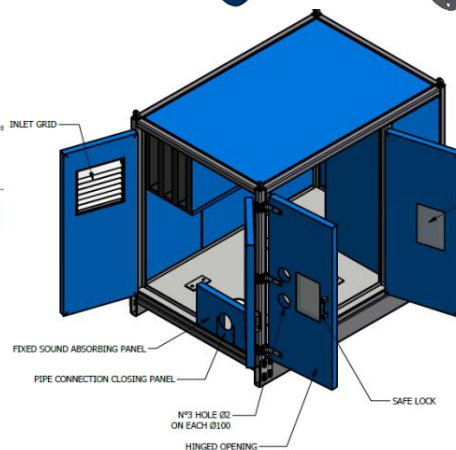
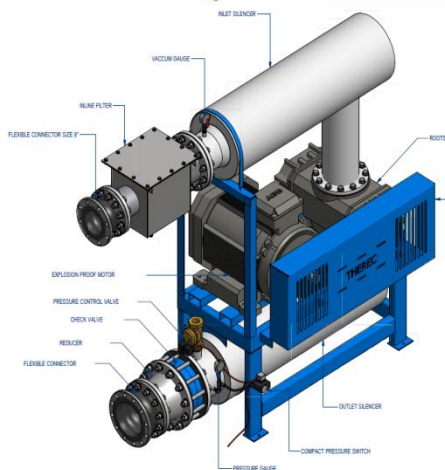
FPZ
BLOWER TECHNOLOGY

ESTERS
ELEKTRONIK **E**

Our own manufacturing Equipment



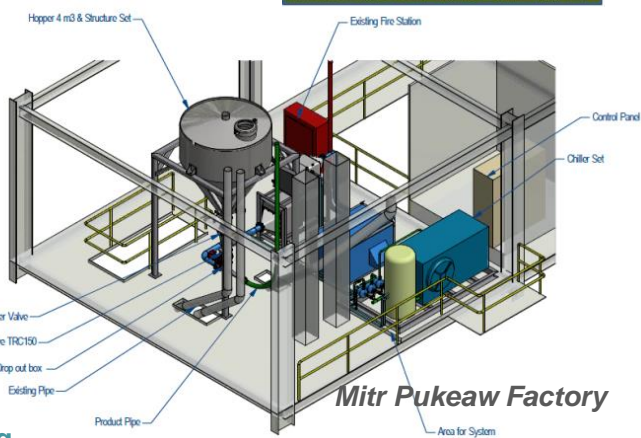
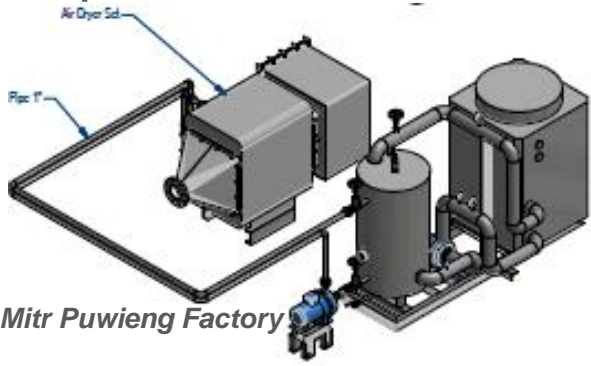
Acoustic enclosure and Silencer for high
pressure blower noise control
Noised Reduction level from 5 dBA to 20 dBA
Material in Carbon and Stainless Steel



www.thereccorp.com

Air & Gas Boosting & Handling system

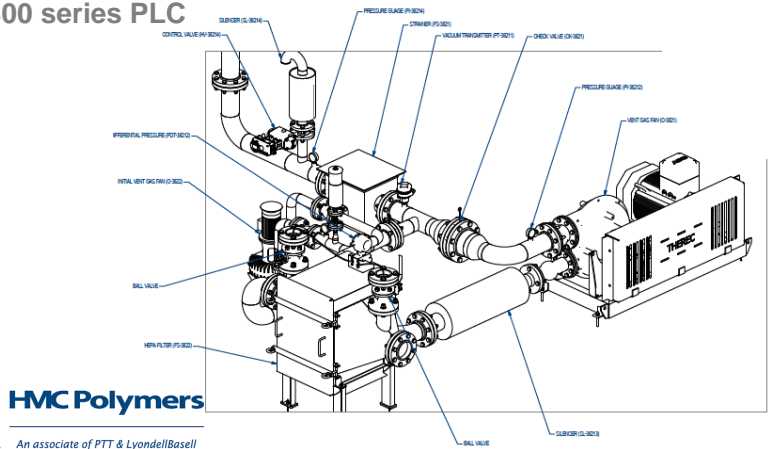
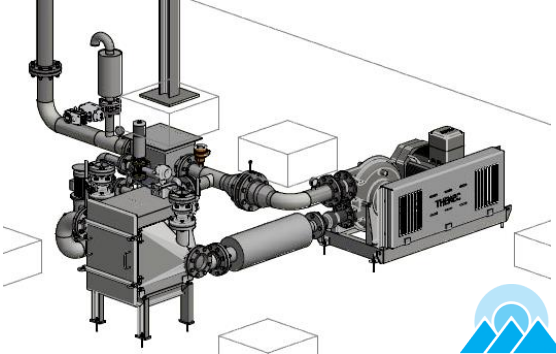
Temperature & Moisture control system



Mitrphol Sugar Co., Ltd./ Sugar pneumatic conveying

Contacted conveying air moisture control to the level below 35% relative humidity to protect the sugar lump and stickiness from ambient moisture.
 Contacted temperature to be under 38 degree C, to protect the internal moisture from flashing out and make the crystal to be dim.
 SCADA control system with SIEMENS S7 300 series PLC

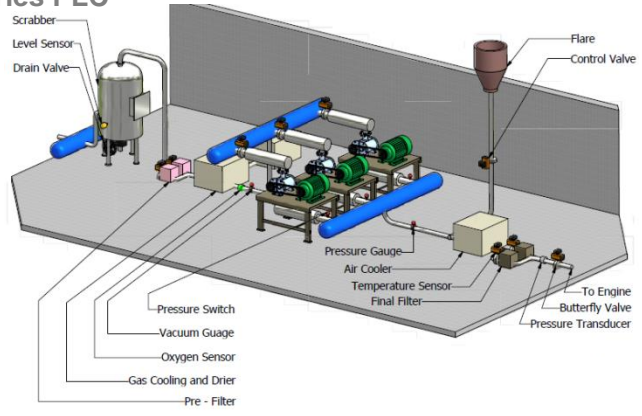
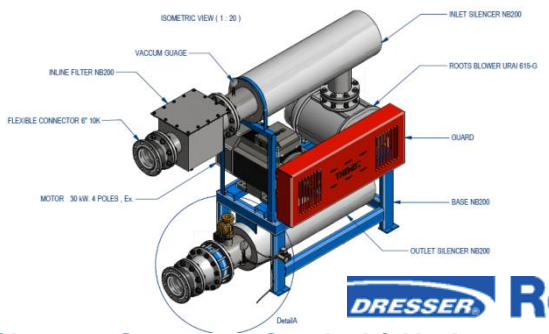
Vacuum control system



HMC Polymer Co., Ltd./ PTT Group of company, job in cooperation with CR Asia

Vacuum control system for central vacuum cleaning system operation, operated by vacuum transmitter and pneumatic control valve to maintain the vacuum level of the system at -300 mBar and maintain the averaged suction air volume of each individual suction point at around 200 cfm of all working condition. Also the differential pressure switch for the filters.
 SCADA control system with ALAN BRADLEY 500 series PLC

Pressure control system



Chareon Sompong Co., Ltd./ Underground Biogas from landfill site

Pressure control system for bio gas boosting station / supply to gas engine of electrical generator
 By pressure transmitter and pneumatic control valve to maintain the pressure of 7 PSI supply to engine regulator and over supply gas to the flare with gas cooler and cooling tower set to maintain the feed in gas to be under 50 degree C and reduced the water content level in the biogas.
 Also with oxygen sensor/transmitter and safety vacuum switch.
 SCADA control system with SIEMENS S7 200 series PLC

Engineering design package set



Roots Blower Package for waste water treatment aeration system /
Thai Union Frozen Product (Public) Co.,Ltd.



Roots Blower Package with filter and header / in SUS 304 / for waste water treatment plant
Biogas boosting set for Electrical power generator
Ubol Ethanol Bio Power Co.,Ltd.



Roots Blower Package for pneumatic conveying system
The Siam Cement (public) Co.,Ltd.



Ring Blower Package for pneumatic conveying system
United Food Co.,Ltd.



Multi stage centrifugal Blower
Biogas boosting set for Electrical power generator
Ekarat Bio Power Co.,Ltd.

On site Installation Service & Commissioning



Therec Corporation Ltd.

Tel ☎ (662) 893 9003-4 Fax : (662) 893 9005

88 Soi Karnjanapisek 4/2 Karnjanapisek Rd. Bangbon Bangkok
10150 Thailand

www.thereccorp.com

Food grade product TRC 001 2018